

# JÖRGEN OLSSON

CEO - Chief Evangelist Olsson

[jorgen.olson@moreware.se](mailto:jorgen.olson@moreware.se)

The logo for 'moreware' is displayed in a white, stylized, serif font. The letters are closely spaced, and the word is set against a solid black rectangular background.

moreware

8 YEARS AGO



# WORKING EVERYWHERE





# I FOUND THE SOLUTION



**12.13.06**

.....  
CrashPlan, our latest invention, launches Jan 8 at Macworld '07. It's the most simple, most reliable and smartest backup on earth... [more news >](#)

**07.11.06**

.....  
Target "Bookmarked" project launched to the public! C42 developed the software for this website which promotes in-store books and hosts online book clubs... [more news >](#)

**CrashPlan launches JAN 8  
at Macworld '07! >**

**codefortytwo**  
software



IT DELIVERED  
ON ALL MY NEEDS



CRASHPLAN

- Continuous backup
- Backup & restore everywhere
- Ease of use
- Secure

# CRASHPLAN TODAY

- Server & Client Software
- Mobile Apps
- Managed Appliances
- Private Cloud, Public Cloud and Hybrid Cloud
- Services

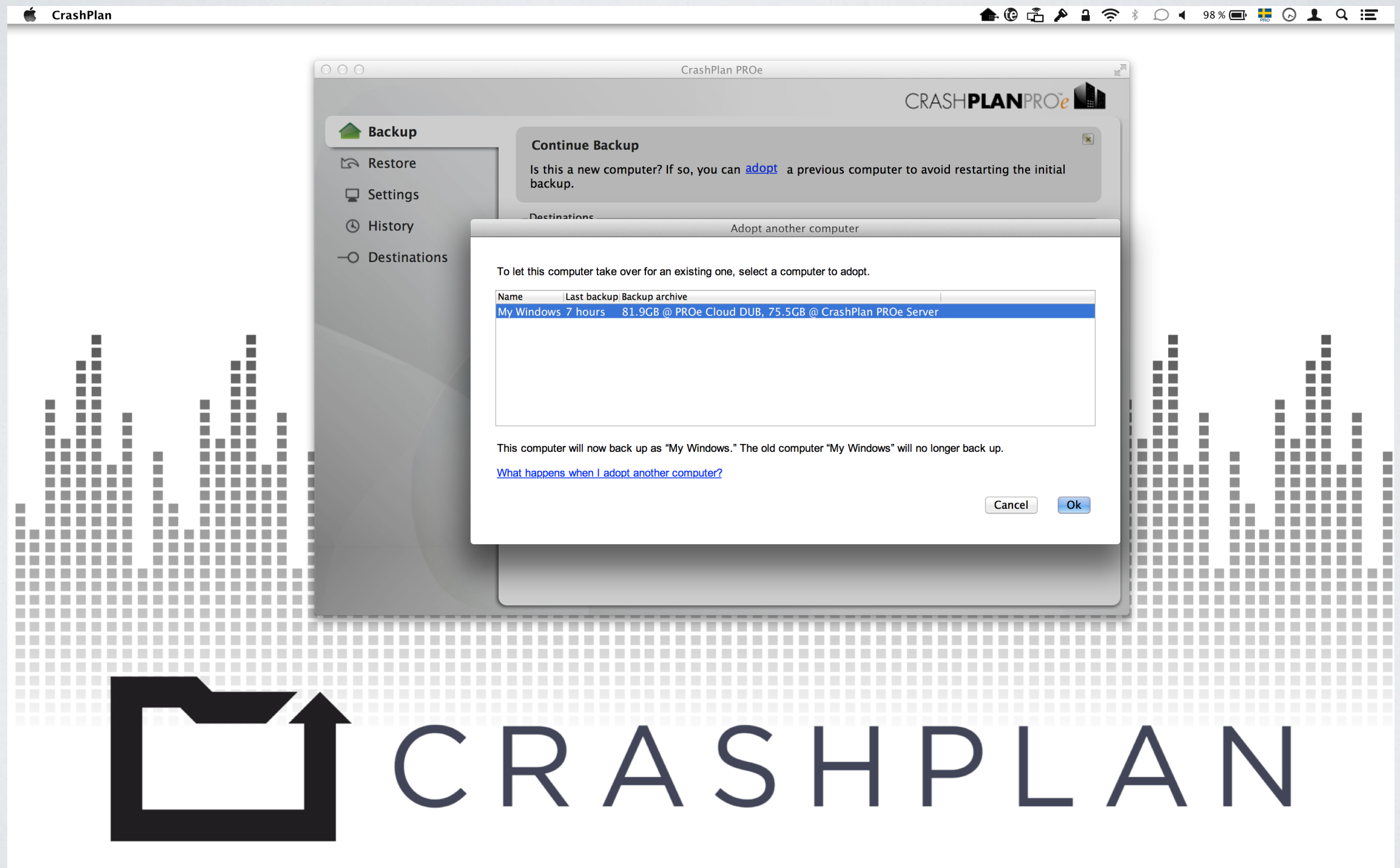




# CRASHPLAN ENTERPRISE

- Multiple Store Points
- Load Balancing
- Active Directory
- Radius & Schiboleet
- Self healing archives
- Block level dedup
- Cross Platform
- Unlimited
- Policy driven settings
- Advanced API

# MIGRATION





''It just works''



# Your Data is on the Edge.

Enabling mobile workforce productivity without putting your organization at risk.

Mark Shaw – Lead Systems Engineer, Code42



# Information shift creates opportunities and challenges...

## CONTENT

### **“Mission-critical data resides on devices.”**

- Unstructured data will account for 90% of all data created in the next decade
- 75% of this data is created by individuals

## MOBILITY

### **“Work happens outside of the office.”**

- 52% of workers use 3 or more devices daily
- Tablets will reach 905 million by 2017

## CONVERGENCE

### **“Work and personal data is not separate.”**

- 60% of workers have used a personal device for work
- 41% of workers used an unsanctioned cloud service in the past 6 months



# Mission-critical data isn't only in your datacenter...



## INSIDE THE DATACENTER

- Central control & visibility
- Fixed & predictable
- Easy to manage
- Easy to protect
- Secure



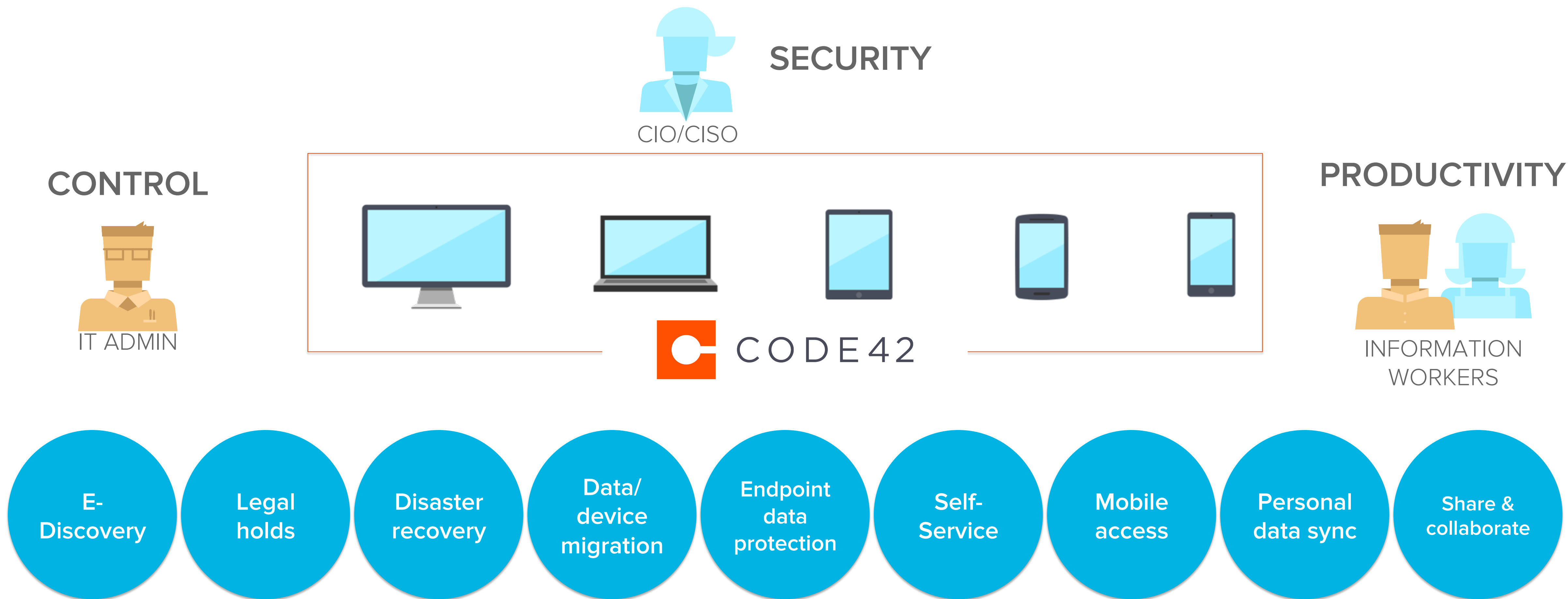
## OUTSIDE THE DATACENTER

- Various user roles & requirements
- Unpredictable usage patterns
- Variety of devices & networks
- High data growth without central control
- Potential for data leaks and loss
- Shadow IT, no Data Governance

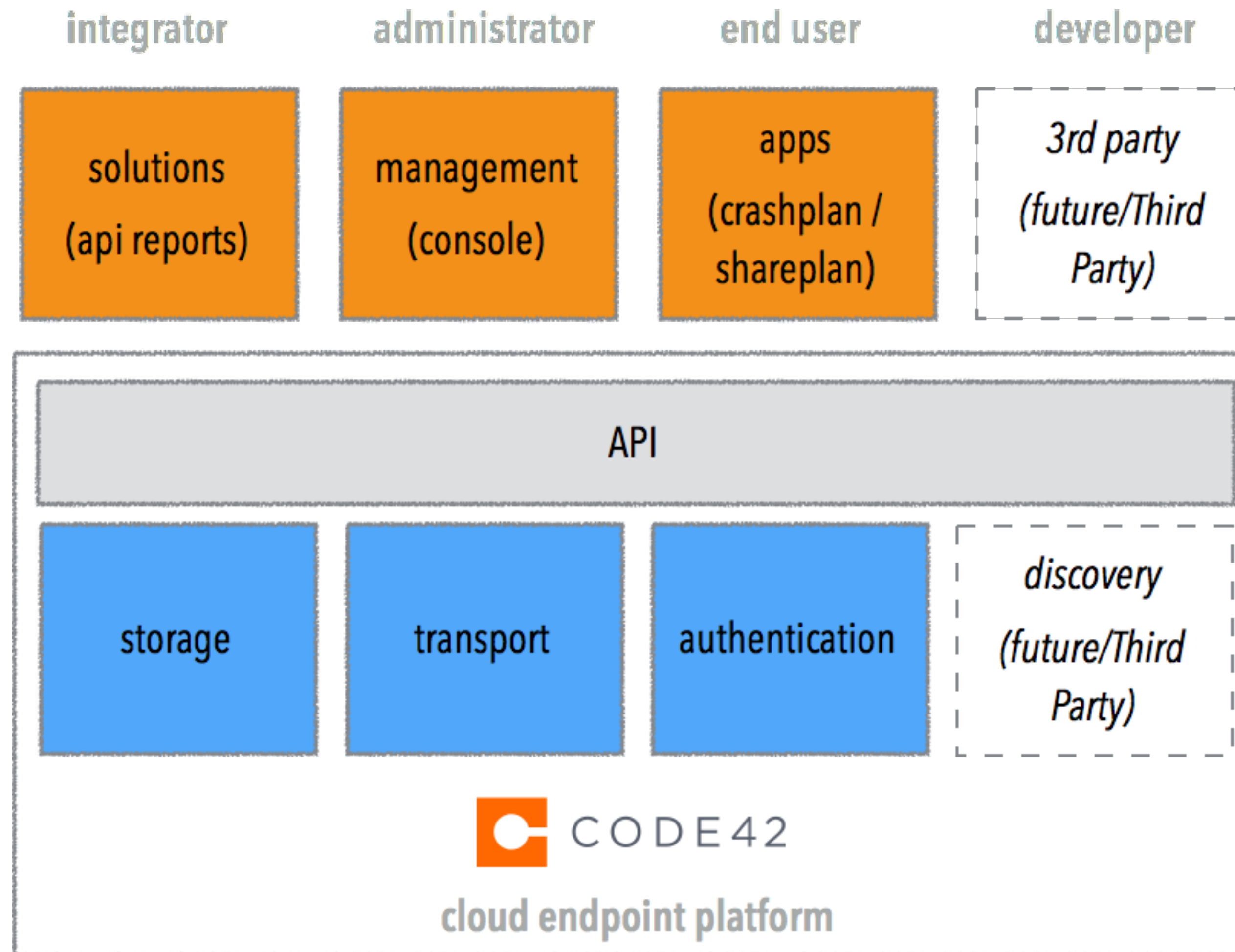
And now more than ever, IT is accountable.



# Security, control & productivity solutions for your corporate data on the edge



# The Code42 Platform





# Today, Code42 delivers these solutions through...



Backup everyone, everywhere.

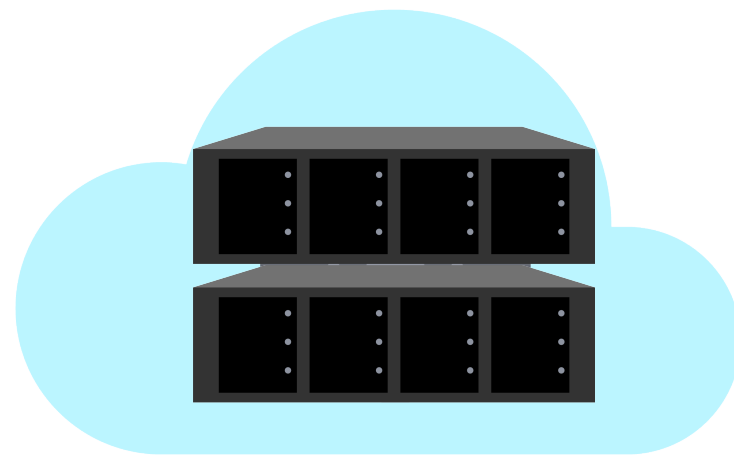


Enterprise-ready file sync & share.



Security, control and productivity platform  
for data on the edge.

# Finally, the right cloud that meets your security requirements



## Managed Private Cloud

Code42 appliance  
in your datacenter

Proactive 24x7  
monitoring & support

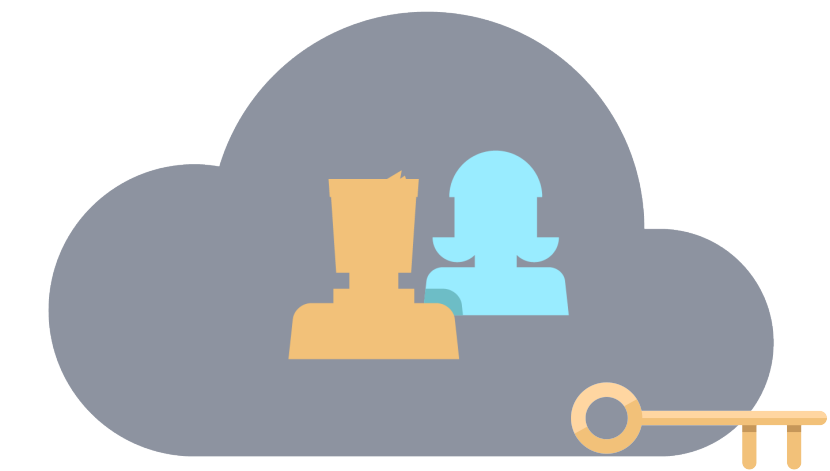
You keep the keys



## Hybrid Cloud

Data stored in private cloud  
AND  
secure Code42 public cloud

You keep the keys



## Public Cloud

Deploy in minutes

Data stored in secure  
Code42 cloud

You can keep the keys



# Sync & Share vs. Backup: Solving Different Challenges

## BACKUP

- Primary business case: data protection
  - Protect all data on the endpoint
    - Uni-directional storage
  - Unlimited versions; keep deleted files forever if desired
  - Restore data when you need it
- Confidential data that needs to stay behind the firewall



Private Device  
Data

Shared Public  
Data

## SYNC & SHARE

- Primary business case: data access
  - Sync and share some of your data
    - Bi-directional movement of data
  - Share with other devices and/or users
    - Collaboratively edit files with others
- Files that need to be shared outside the firewall

**ENTERPRISES NEED BOTH APPLICATIONS,  
BUT THEY REQUIRE DIFFERENT TOOLS.**

# DEMO