

Apple –Managed with Microsoft

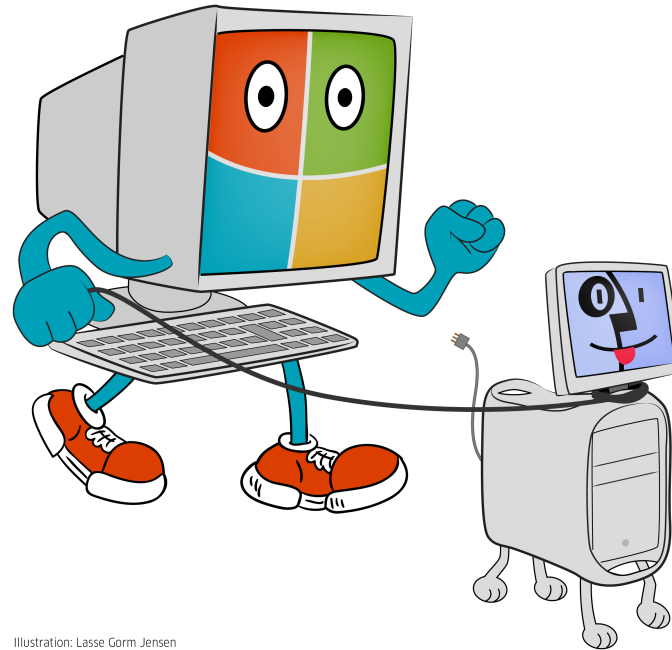


Illustration: Lasse Gorm Jensen

Anders Meinert, amei@atea.dk
Sebastian Bredsdorff, semb@atea.dk

Atea

- Leading Nordic and Baltic supplier of IT infrastructure and solution integration
- 6.500 employees
- 3.700 consultants
- 7.500 technology certifications
- 82 locations in Denmark, Norway, Sweden, Finland, Lithuania, Latvia and Estonia

Session Objectives

- What is SCCM 2012 SP1?
- Why is SCCM 2012 SP1 relevant for Atea?
- Atea case story
- SCCM 2012 Feature set for Mac
 - Enrollment – DEMO
 - Application deployment – DEMO
 - Compliance and configuration – DEMO
 - Hardware and software inventory - DEMO
 - Atea Enterprise App portal - DEMO
 - Atea Package factory for Mac.
- Q & A

What is System Center 2012 Configuration Manager ?

- Systems management product by Microsoft.
- Existed since 1994 (SMS)
- SCCM 2007 managed +100.000.000 client world wide.
- Current Release is SCCM 2012 SP1
- Capable of managing: all flavors of Windows, iOS, Symbian, Unix, Linux and Mac OS X.

Why is SCCM 2012 relevant for Atea?

- Popular and wide spread in the Enterprise segment
- Atea has hundreds of customers using SCCM today
- Many customers have un-managed Mac's
- Atea has +200 consultants working with SCCM with customers

The Mac 4 Enterprise project

Mission statement:

“The goals of the service design of Mac 4 Enterprise is to provide a highly available and user friendly service for the users at Atea. These services will enable Atea employees to work as efficient, productive and compliant on a Mac with OS X in an enterprise environment as on any Windows PC equivalent”

Current scenario

- Approx. 1500 Mac's in Atea global – unmanaged
- Atea's platform strategy: We support Microsoft & Apple – Windows & OS X
- Flexible benefits. Employees can choose their own device (company/employee Liability)



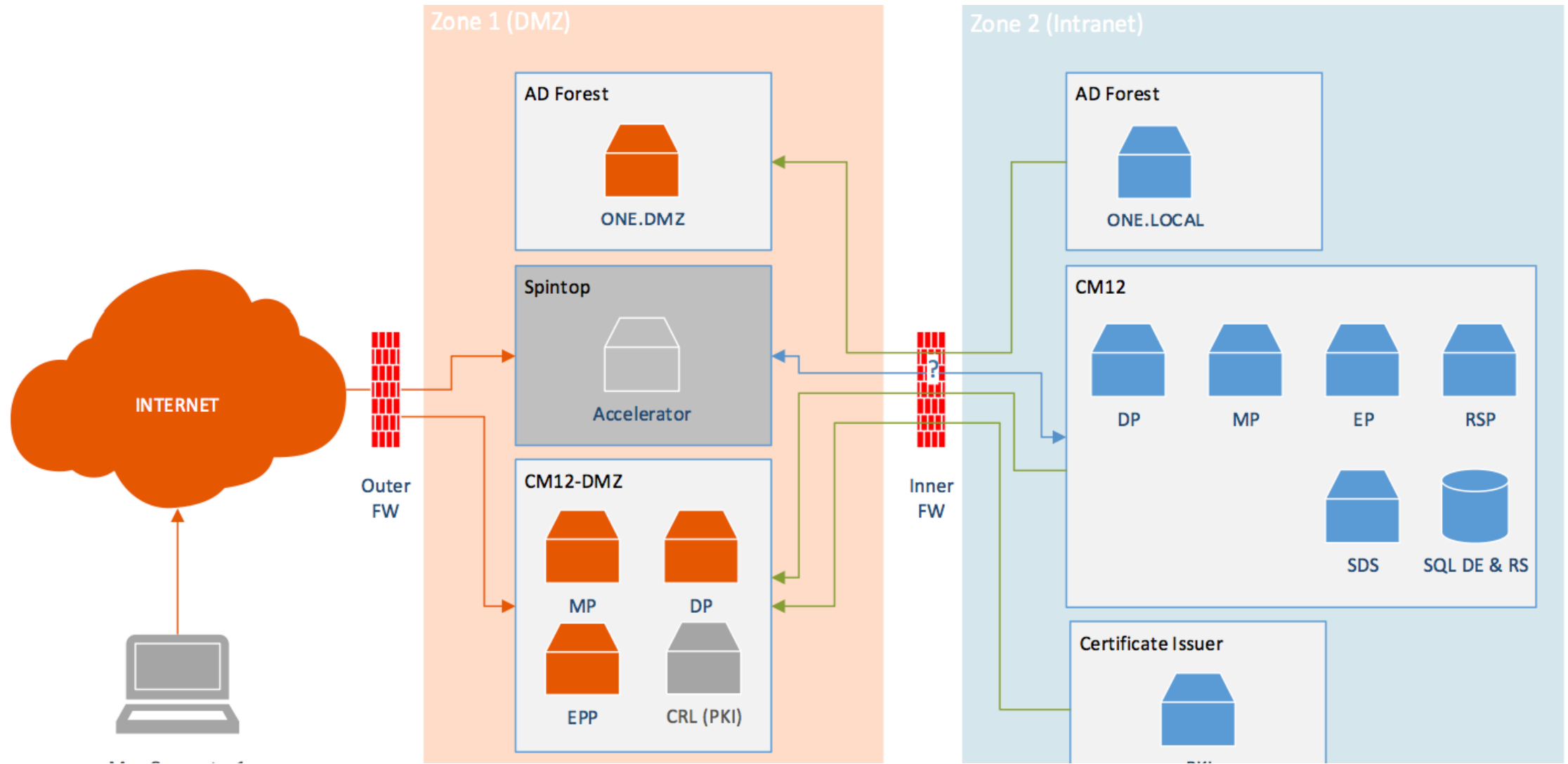
Target scenario

- Support the concept of 'Flexible work style'
- Key values
 - Self service
 - Universal connectivity
 - Secure compliance to company security policy and legal requirements
 - Retaining Apple user experience and Apple consumer faced services
 - Focus on costs
 - Reuse existing management infrastructure (SCCM)
 - Leverage existing service and support functions, Client Ops dept., Software Packaging dept., Service desk...

SCCM 2012 R2 Mac Features

- Supported features:
 - Secure OTA enrollment (BYOD)
 - Active Directory & Network Discovery
 - Hardware & Software Inventory
 - Settings Management
 - Application Deployment
 - Audit & Reporting

Mac4Ent technical overview



Infrastructure and SCCM roles

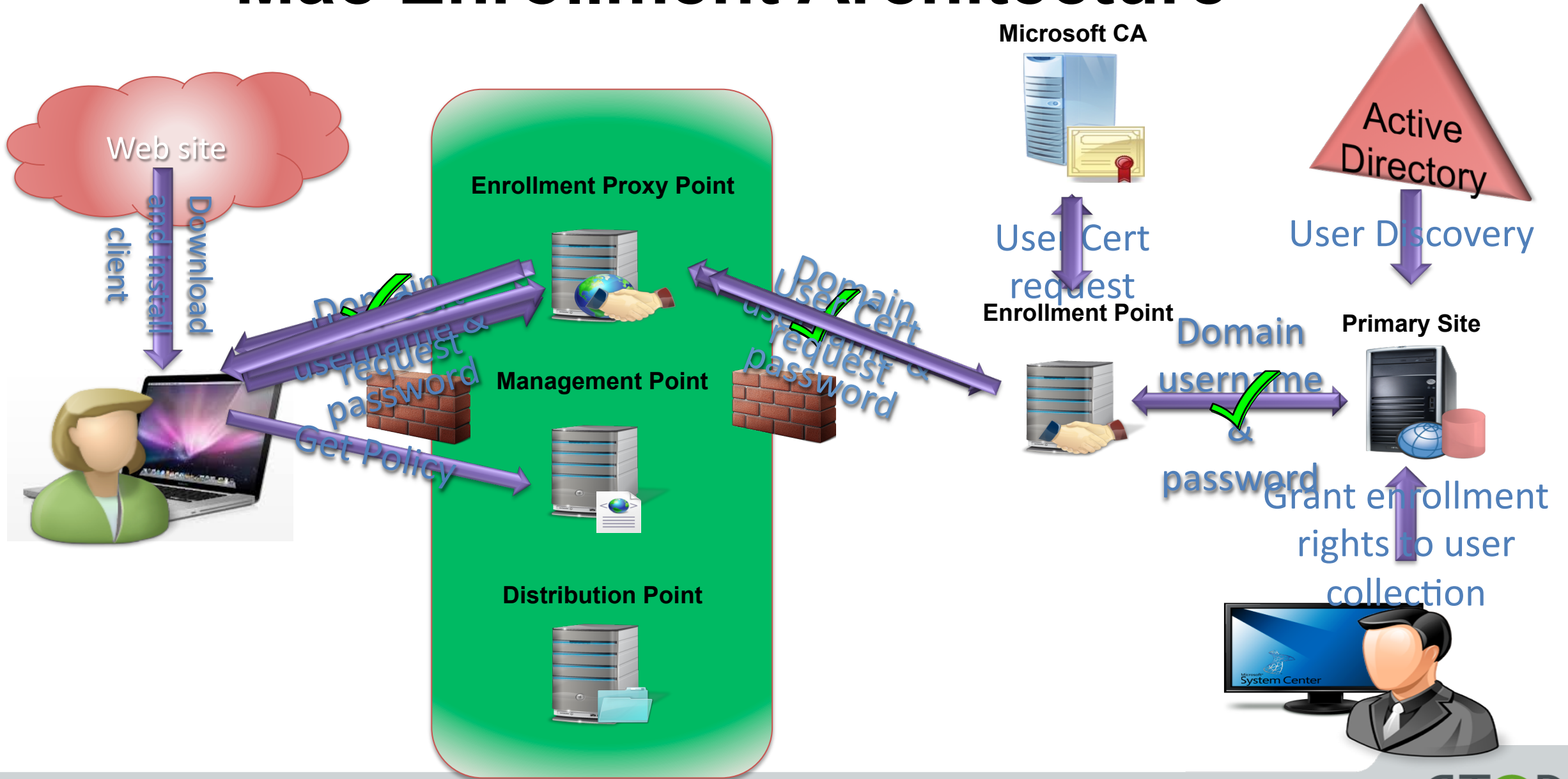
SCCM roles

- Enrollment Proxy Point /HTTPS
- Enrollment Point
- Management Point w/ HTTPS
- Distribution Point w/ HTTPSI

Infrastructure services

- Microsoft Certificate Authority (Pub. CRL)
- Active Directory

Mac Enrollment Architecture



Mac Client Enrollment Util with SCCM 2012 SP1

Distribute client & tools package to Mac

- Package available on the Microsoft Download Center
- No built-in 'push' install for the ConfigMgr Mac client

Install client using Ccmsetup.pkg

Enroll client using CMEnroll

- Supply user domain credentials
- CMEnroll requests and installs user certificate
- Client contacts Management Point for policy

Configuration Manager applet appears in System Preferences

The image shows a Mac System Preferences window with the Configuration Manager applet selected. The applet window displays the following information:

View and configure the client properties for System Center 2012 Configuration Manager.

Property	Value
Certificate subject name	Melissa Meyers
Certificate expiration date	04/01/2014 04:40PM
Management point	https://FLAPrimary.fla.nttest.microsoft.com:443...
Unique identifier	GUID:AD527B51-55EF-4104-9AB3-79B566B90905
Client version	5.00.7804.1000
Last successful connection	04/03/2013 02:23PM

Connecting... Connect Now

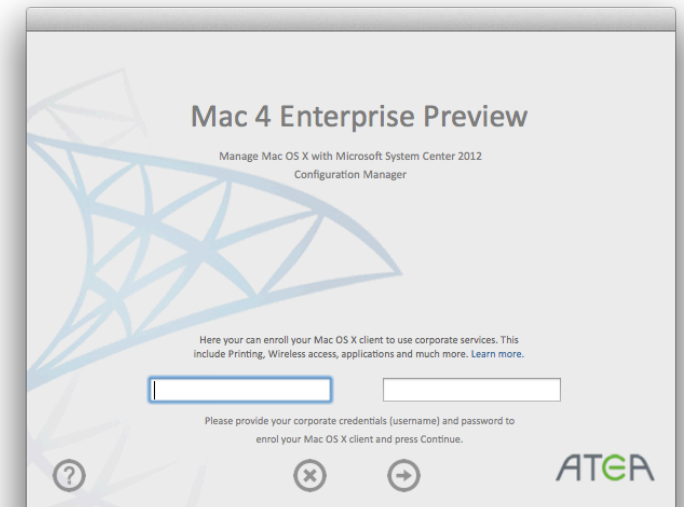
Mac Client Enrollment Util with SCCM 2012 SP1

From Microsoft Technet :

```
Sudo ./CCMEnroll – server servername.somedomain –u ‘domain\username’ –p ‘Password’ -ignorecertificatechainvalidation
```

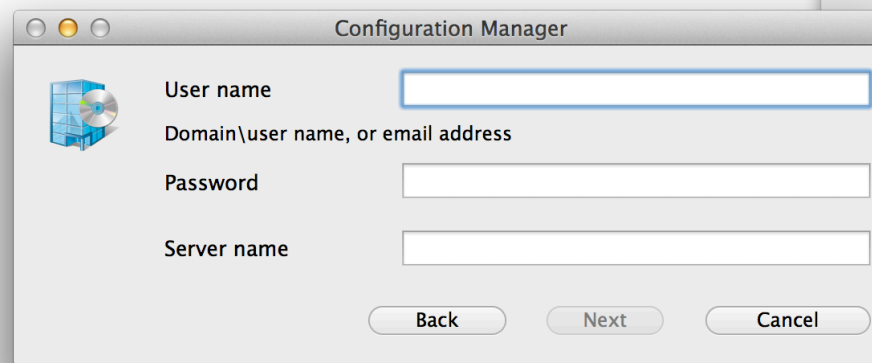
Atea Enrollment App

- Why our own App?
- Features:
 - User friendly
 - Join
 - Leave
 - SOTI (secure over the internet)
 - Active Directory authentication
 - Support for SCCM 2012SP1 and R2



Microsoft Enrollment App SCCM R2

- Features:
 - Join
 - SOTI (secure over the internet)
 - Active Directory authentication
 - Only support for SCCM 2012 R2



Configuration Manager

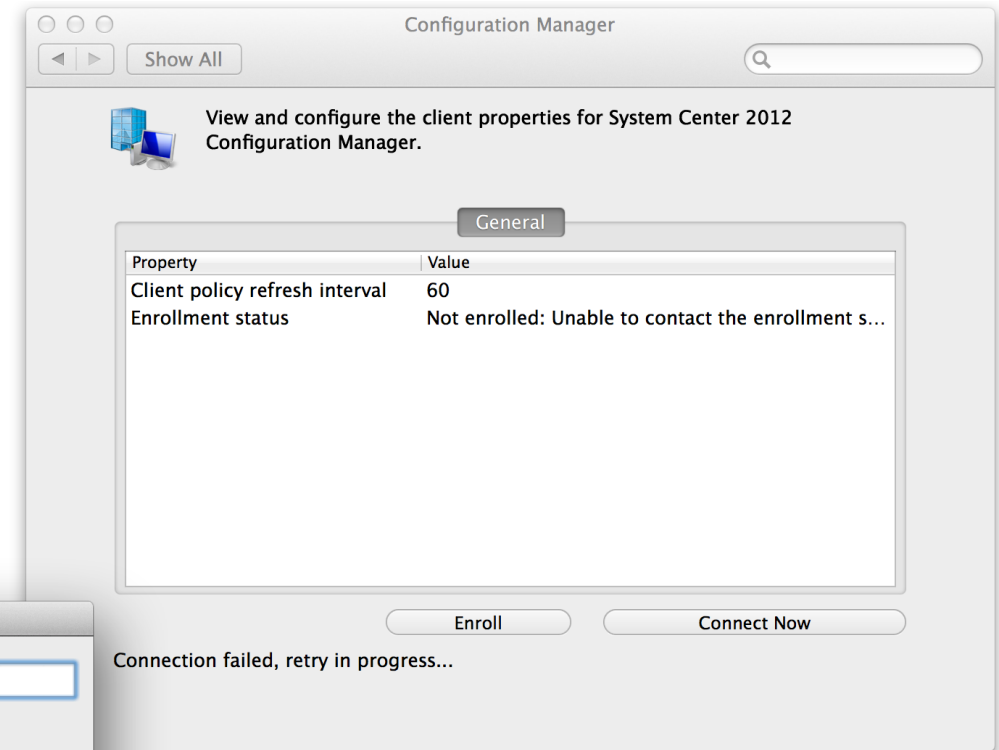
User name

Domain\user name, or email address

Password

Server name

Back Next Cancel



Configuration Manager

Show All

View and configure the client properties for System Center 2012 Configuration Manager.

General

Property	Value
Client policy refresh interval	60
Enrollment status	Not enrolled: Unable to contact the enrollment s...

Enroll Connect Now

Connection failed, retry in progress...

Demo – Mac4Ent Enrollment

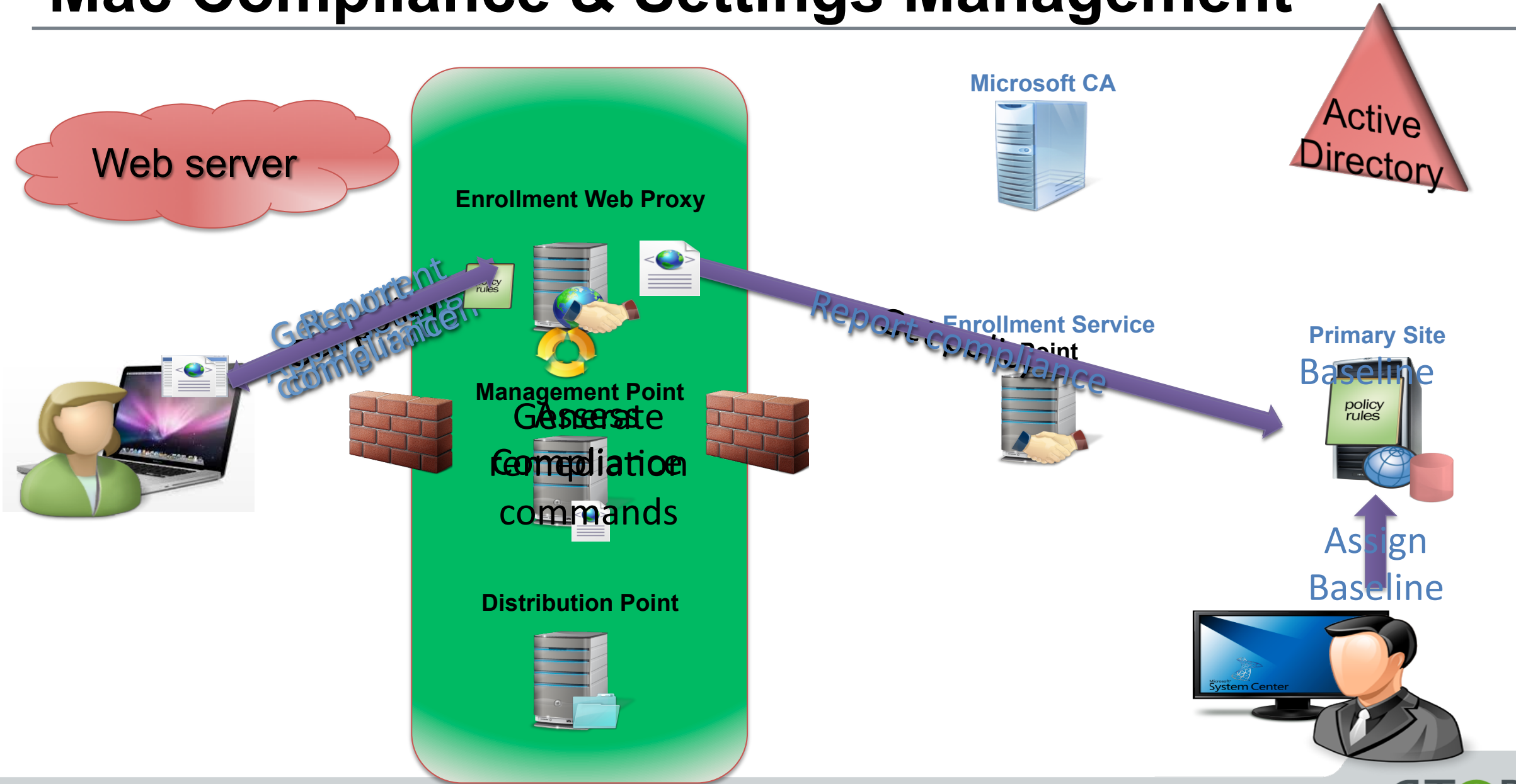


Mac Compliance & Settings Management

- Based on Desired Configuration Management (DCM)
- Evaluate a setting – and opt. remediate the setting
- No default functionality – no checkboxes
- Based on Preferences and Script
- Preferences only support system domain
- User preferences - not supported.



Mac Compliance & Settings Management



DEMO - Compliance & Settings Management

The screenshot displays the System Center 2012 R2 Configuration Manager Preview interface. The window title is "System Center 2012 R2 Configuration Manager Preview (Connected to WEW - wewtest) (Evaluation, 104 days left)". The breadcrumb path is "Assets and Compliance > Overview > Compliance Settings".

The left-hand navigation pane, titled "Assets and Compliance", includes the following items:

- Overview
- Users
- Devices
- User Collections
- Device Collections
- User State Migration
- Asset Intelligence
- Software Metering
- Compliance Settings (selected)
- Endpoint Protection

The main content area is titled "Compliance Settings" and features a "Navigation Index" with the following links and descriptions:

- Configuration Items:** Manage configuration items that contain settings for computers or mobile devices. You can create your own configuration items or download them from a software vendor.
- Configuration Baselines:** Manage the configuration baselines that contain the configuration items that you want to deploy to a collection for compliance evaluation. You can create your own configuration baselines or download them from a software vendor.
- User Data and Profiles:** Manage user settings for folder redirection, offline files and roaming profiles.
- Remote Connection Profiles:** Use remote connection profiles to enable users to remotely connect to work computers from outside the domain, or over the Internet.
- Company Resource Access:** Manage access to company resources by using VPN, Wi-Fi and certificate profiles.

Below the navigation index, there is a section for "Recent Alerts (0) - Last updated: 9/12/2013 11:26:55 AM".

The bottom of the window shows the Windows taskbar with the system tray displaying "Ready", "DAN", and the date/time "11:27 AM 9/12/2013".

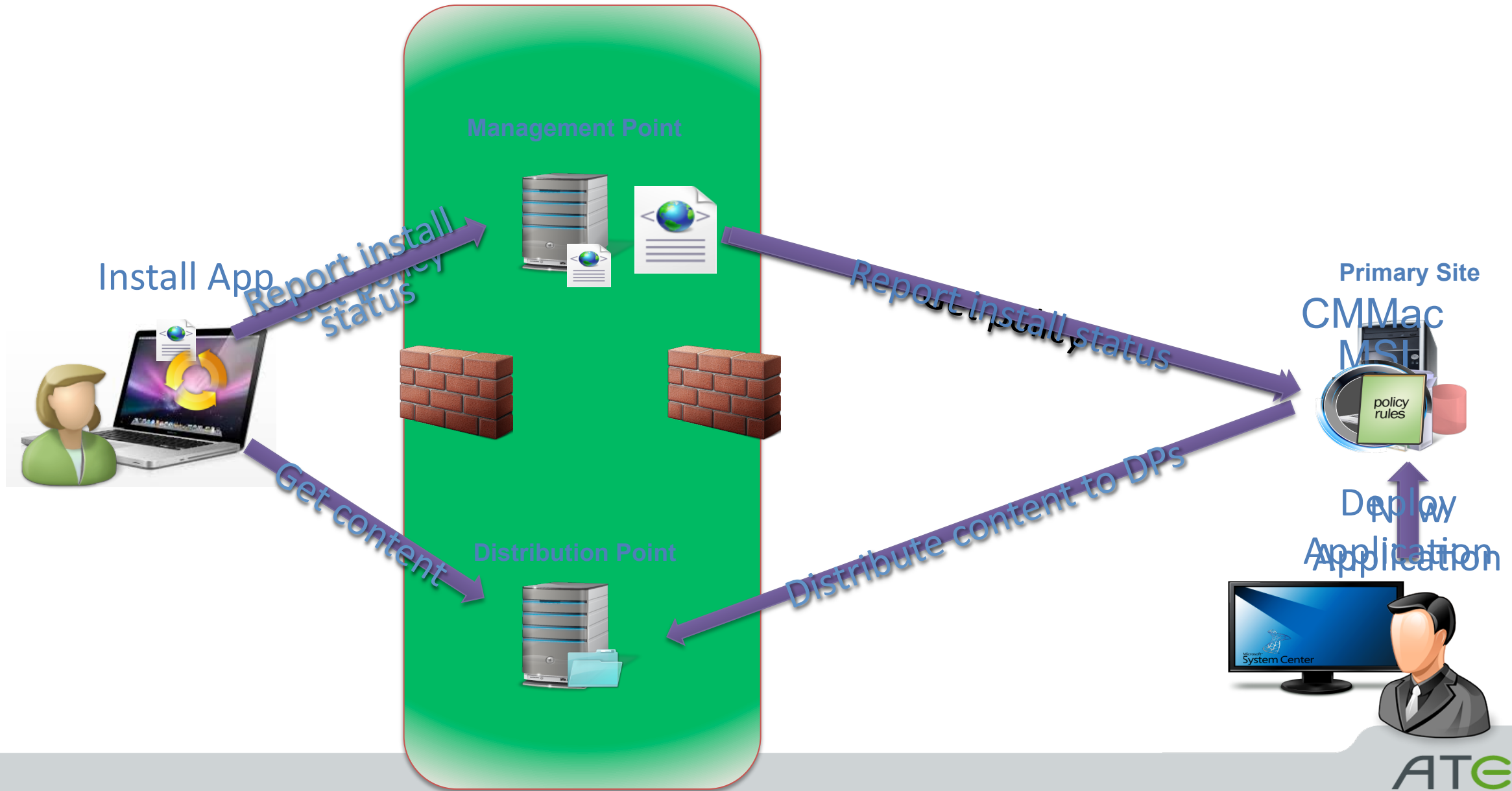
Demo – Baseline



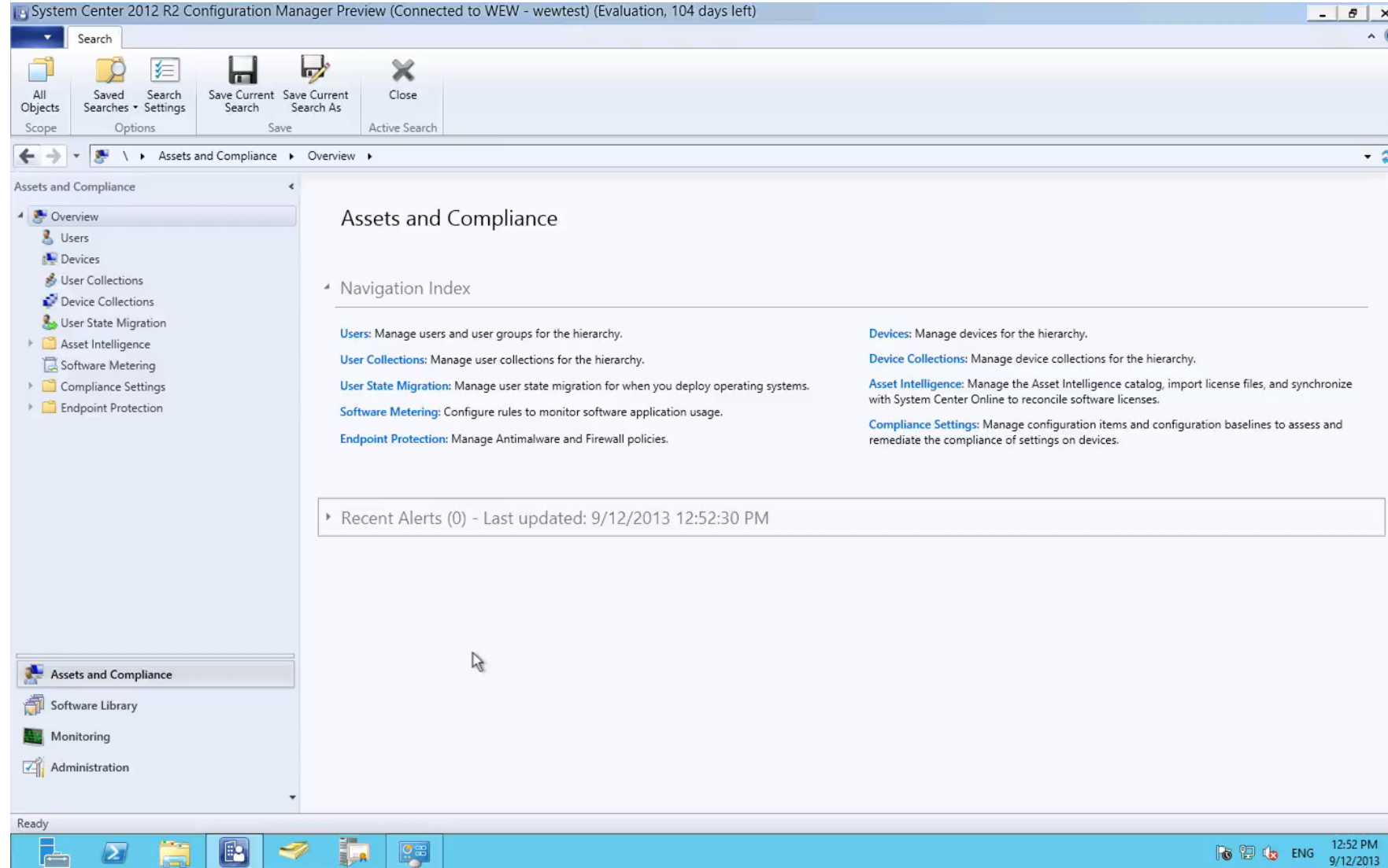
Mac Software Distribution

- Application model
 - Wrap Mac installer types using CMAAppUtil
 - Supports .app, .pkg, .mpkg, and .dmg formats
 - Interrogates Mac installer to gather detection method and application metadata
 - Creates a compressed archive with the .cmmac ext. containing the package and detection xml.

Mac Software Distribution Architecture



Demo – Install App



Demo – Install App



Mac Inventory

Overview

- Reported via Hardware Inventory, including installed apps

Objects

Processor

Computer System

Disk Drive

Disk Partition

Network Adapter

Operating System

Process

Installed Software

Computer System Product

USB Controller

CDROM Drive

Desktop Monitor

Services

USB Device

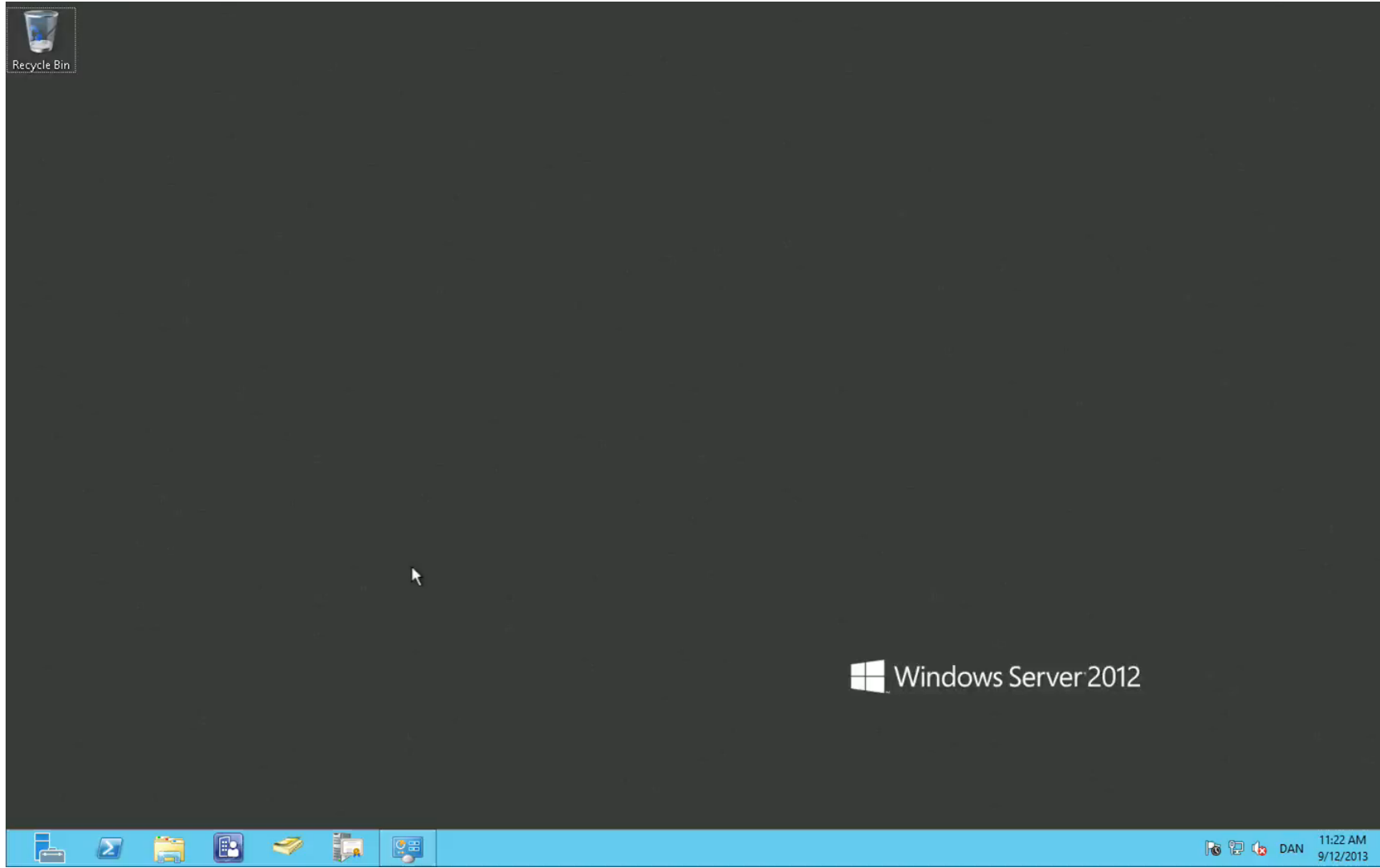
Portable Battery

Printer

Physical Memory

Video Controller

DEMO – Hardware Inventory



Accelerator - Software Catalog

- A part of Atea Global Services
- Self-service portal
- Requester/Approval workflow
- Supports any device/platform
- Native integration til ConfigMgr

Read more:

- http://services.atea.com/services_uk/products.aspx

DEMO – Acellerator – Software Catalog



Package factory

Application Manager

My Page Applications Users Schedules Reports AppUpdate Configuration

Assignments Issues Extended search Delivery report

Package Details

This page allows you to add or edit package request information on each stage.

Files Documentation Issues (0)

Package Information

VIA

New & Discovery Packaging Deployment UAT Complete

New & Discovery Packaging Deployment UAT Complete

Application name:

Test

Application number: 3

Project: Atea One MAC AM

Status: New & Discovery

Repackaging location: internal

Request date: 10.07.2013 10:25:21

Version:

Vendor:

Assigned to: Meinert, Anders

[View request summary report](#)

[View request history](#)

[View additional info](#)

1. General Information

* 1.1. Request name: Adobe CS 6

1.2. Application name: Adobe CS 6 Photoshop

1.3. Vendor name: Adobe

1.4. Version: 6

1.5. Description: Long description here

* 1.6. OS platform: OS X

* 1.7. Packaging method: MAC

1.8. Packaging priority: Priority 2

1.9. Business unit:

1.10. Billing business unit:

1.11. Deployment stage: stage 1

1.12. Prime location: Location 1

1.13. UAT test level: Does not require UAT

1.14. Deployment region: Denmark

1.15. Language: English

1.16. Reference Nr:

Ordering Mac Applications supported

Support for native Mac package formats and SCCM format

Atea Global Services

Get more info on Atea Global Services website

- http://services.atea.com/services_uk/solutions.aspx
- http://services.atea.com/services_uk/products.aspx

The End!

Q&A